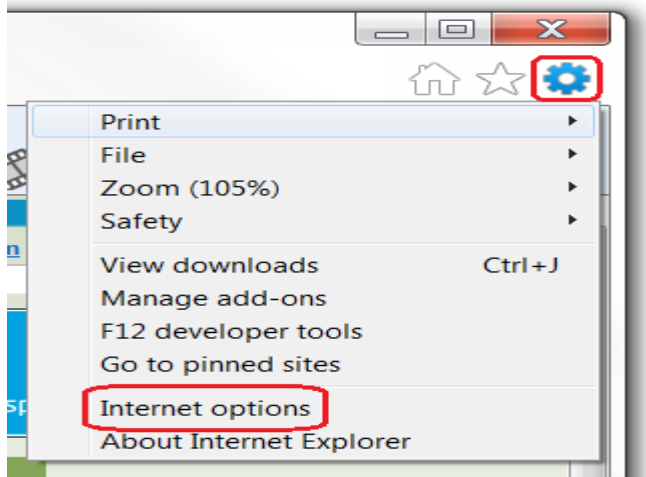
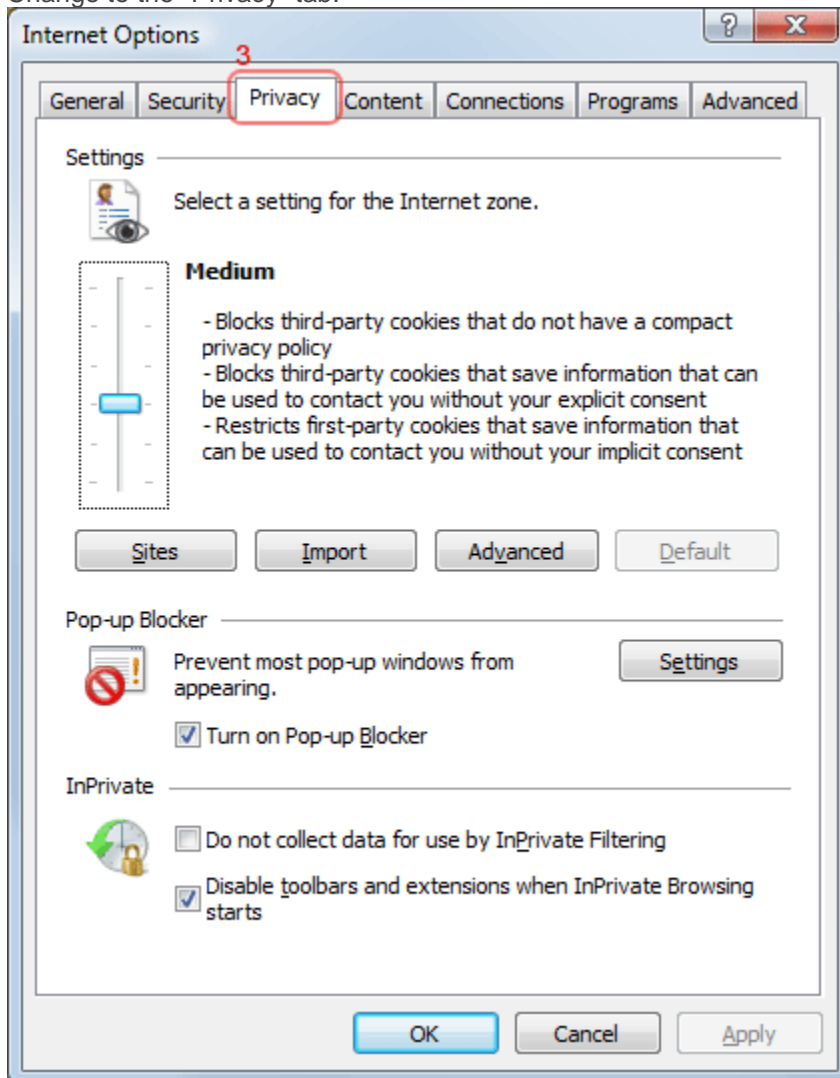


Internet Explorer 9.0 – Internet Explorer 11.0

1. Click on the gear-wheel icon at the top right of the browser window.



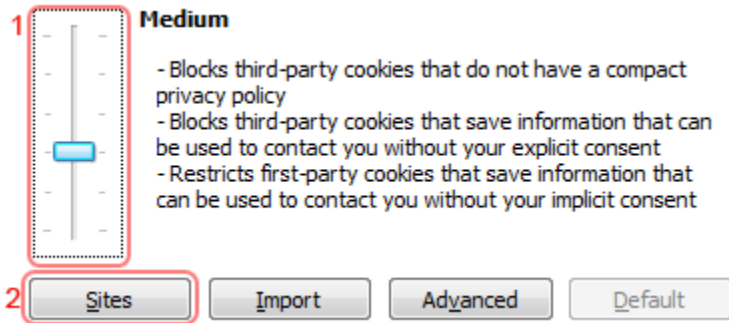
2. Click "Internet Options".
3. Change to the "Privacy" tab.



4. You now have two options depending on how much you want to restrict cookies:

Automatic cookie handling

1. Set the slider to "Medium".

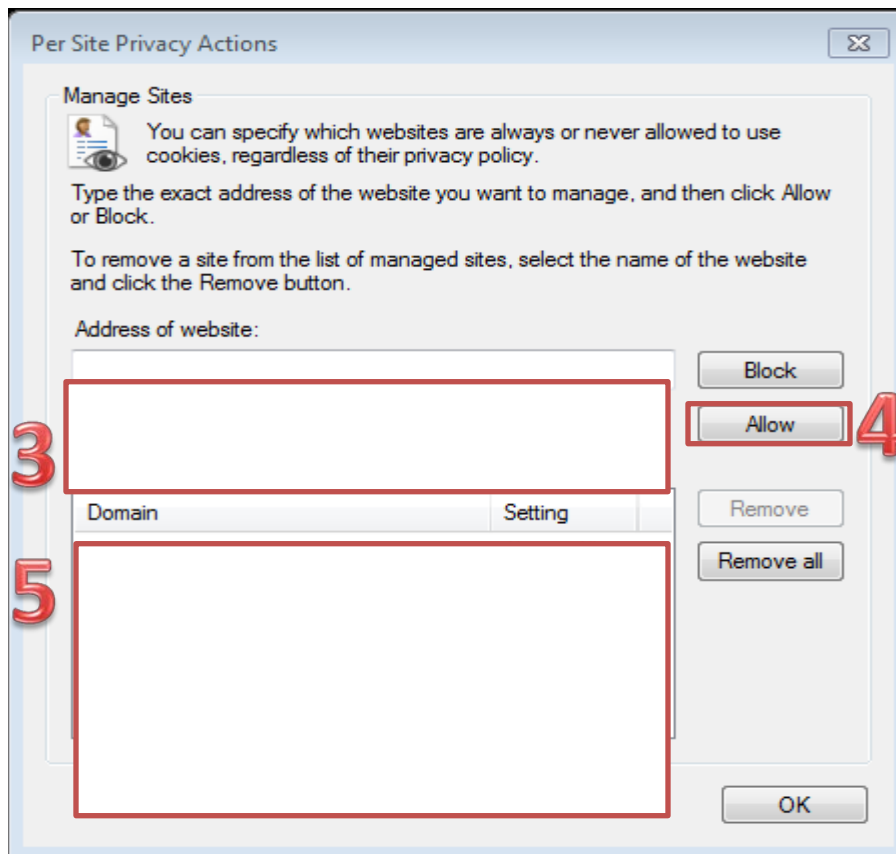


2. This should be enough to enable cookies on (Use the Web site their trying to get to), but it is recommended to add to the Sites list. To do this, click "Sites"

3. Enter "the web site " in the " Use the Web site their trying to get to:" input.

Rain Employer Portal add **wrsrainemployer.wyo.gov**
Rain Participant Portal Add **wrsrain.wyo.gov**
457 Deferred Comp Add **wrsdcpguest.gwrs.com**

4. Click Allow



5. The Website you just added should show up in this box if need add more websites.

6. Click "OK".

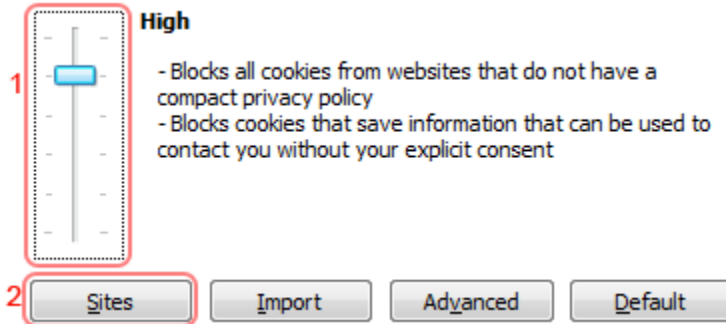
7. Click "OK".

Put the website address in the Box under Address of Website then Click the Allow Button.

8. Restrict to selective sites

NOTE: using this method you will have to enable cookies for every site you need them on.

9. Set the slider to "High".

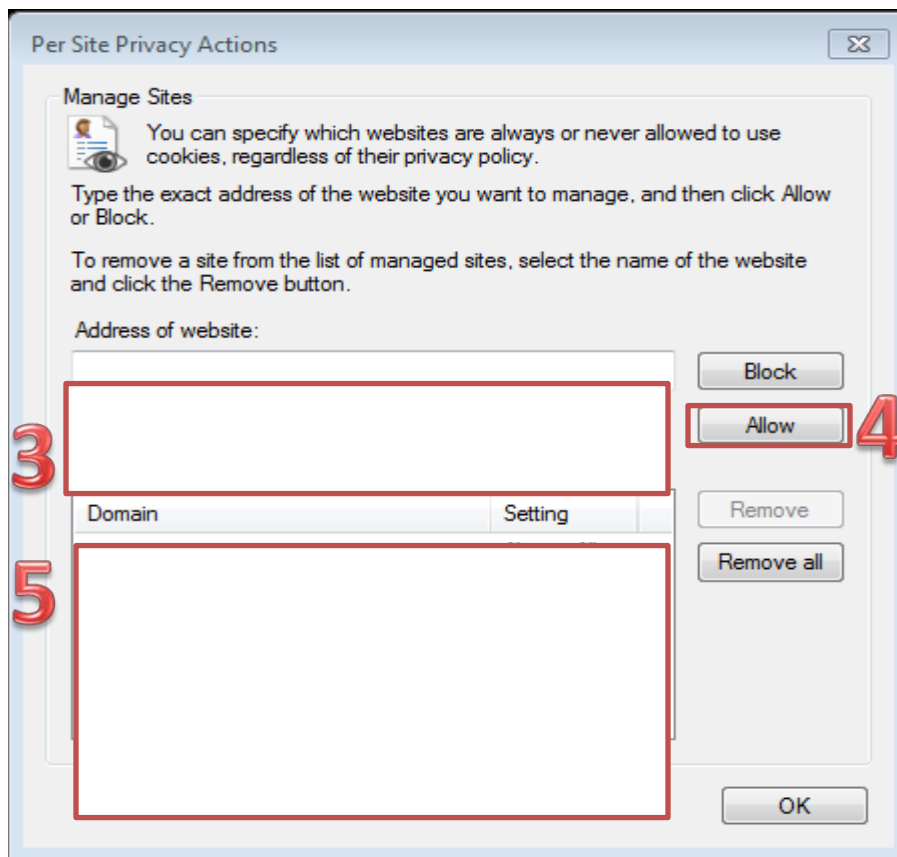


10. Click "Sites".

11. Enter "the web site " in the " Use the Web site their trying to get to:" input.

Rain Employer Portal add **wrsrainemployer.wyo.gov**
Rain Participant Portal Add **wrsrain.wyo.gov**
457 Deferred Comp Add **wrsdcpguest.gwrs.com**

12. Click Allow



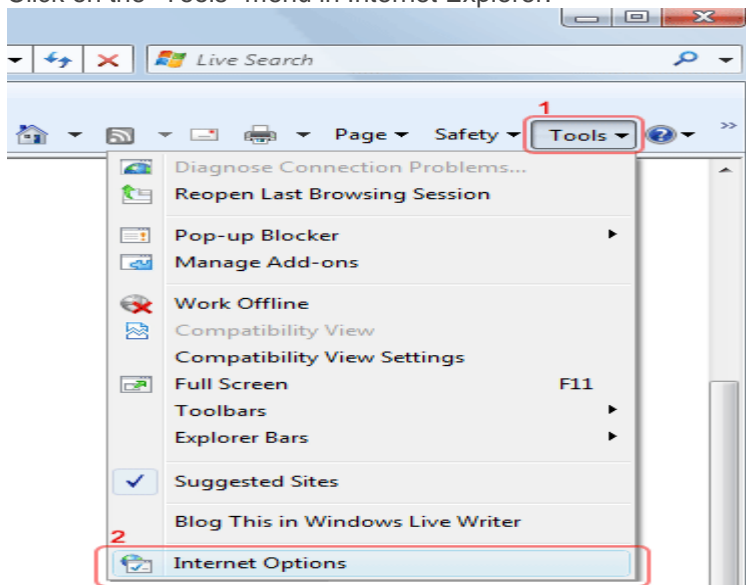
13. The Website you just added should show up in this box if need add more websites.

14. Click "OK".

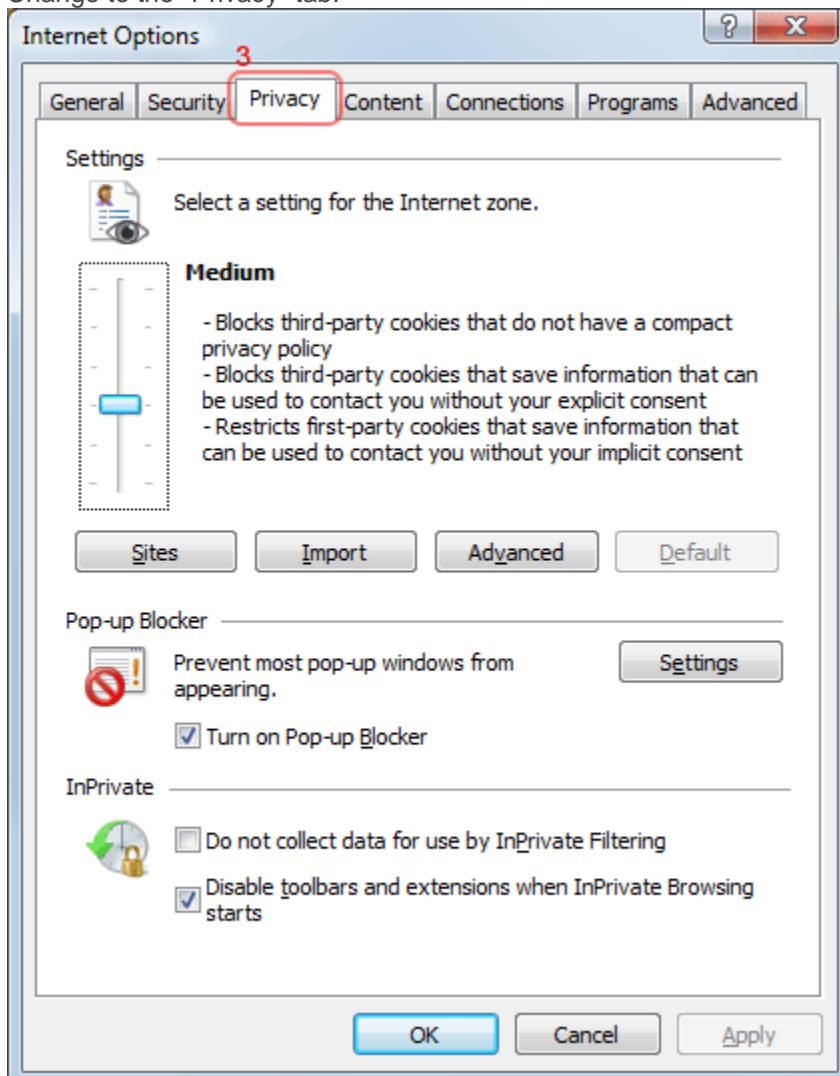
15. Click "OK".

Internet Explorer 8.0

1. Click on the "Tools" menu in Internet Explorer.



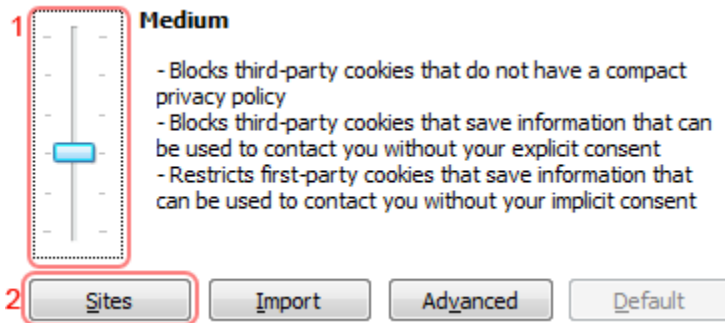
2. Click "Internet Options".
3. Change to the "Privacy" tab.



4. You now have two options depending on how much you want to restrict cookies:

Automatic cookie handling

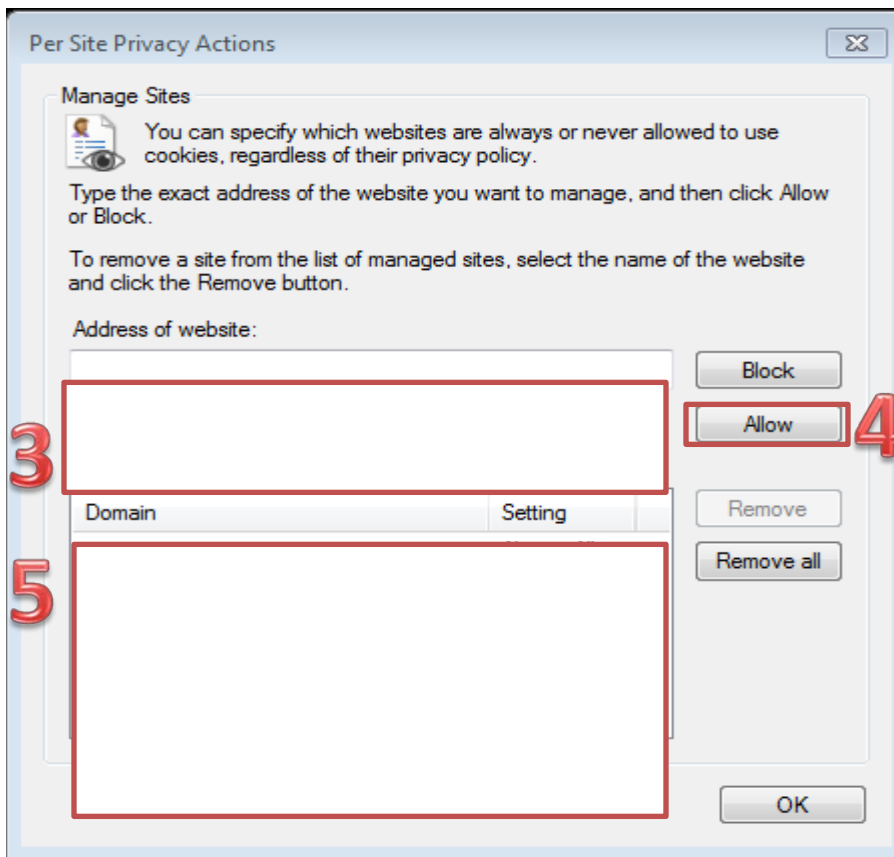
1. Set the slider to "Medium".



2. This should be enough to enable cookies on timeanddate.com, but it is recommended to add timeanddate.com to the Sites list. To do this, click "Sites".
3. Enter "timeanddate.com" in the "Address of the website:" input. Enter "the web site " in the " Use the Web site their trying to get to:" input.

Rain Employer Portal add wrsrainemployer.wyo.gov
Rain Participant Portal Add wrsrain.wyo.gov
457 Deferred Comp Add wrsdcpguest.gwrs.com

4. Click Allow



5. The Website you just added should show up in this box if need add more websites.
6. Click "OK".
7. Click "OK".

16. Restrict to selective sites

NOTE: using this method you will have to enable cookies for every site you need them on.

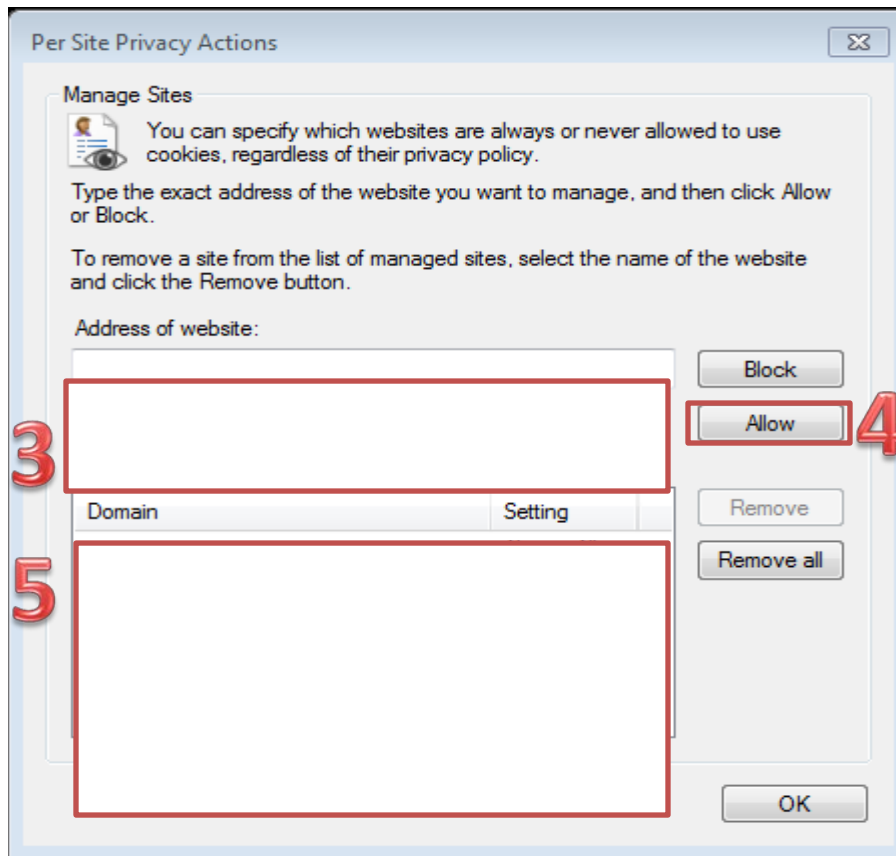
9. Set the slider to "High".



10. Click "Sites".

11. Enter "the web site " in the " Use the Web site their trying to get to:" input.
Rain Employer Portal add **wrsrainemployer.wyo.gov**
Rain Participant Portal Add **wrsrain.wyo.gov**
457fered Comp Add **wrsdcpguest.gwrs.com**

12. Click Allow



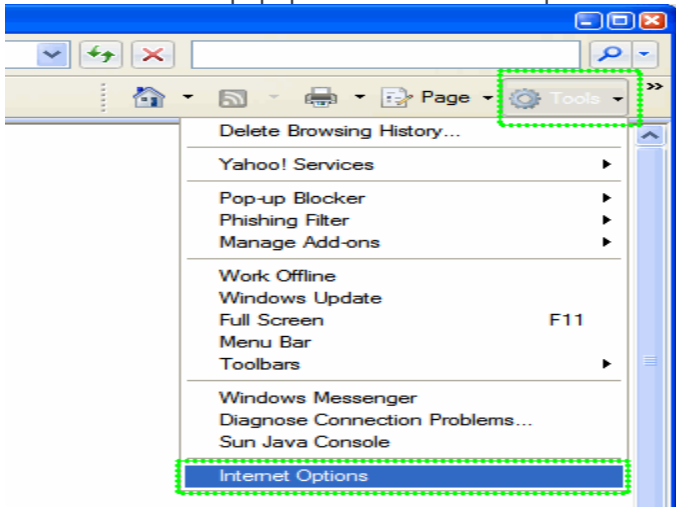
13. The Website you just added should show up in this box if need add more websites.

14. Click "OK".

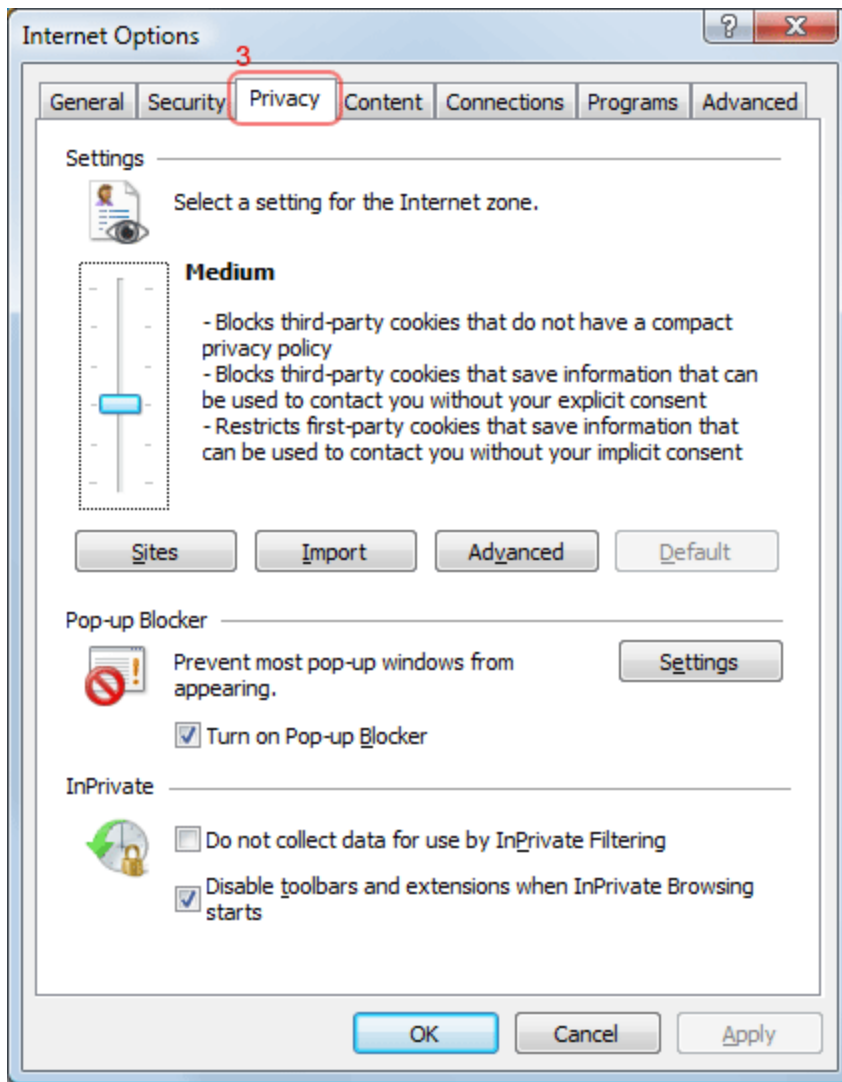
15. Click "OK".

Internet Explorer 7.0

1. Click on the **Tools** popup-menu in Internet Explorer.



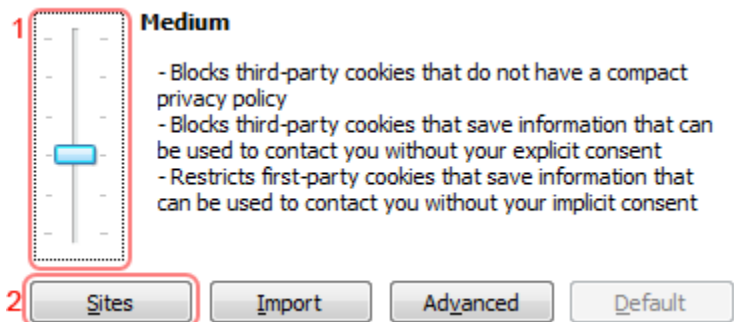
2. Click on the **Internet Options** item in the menu - a new window opens.
3. Click on the **Privacy** tab near the top of the window.
4. Click on the **Sites** button - another window opens.



- 5.
6. You now have two options depending on how much you want to restrict cookies:

Automatic cookie handling

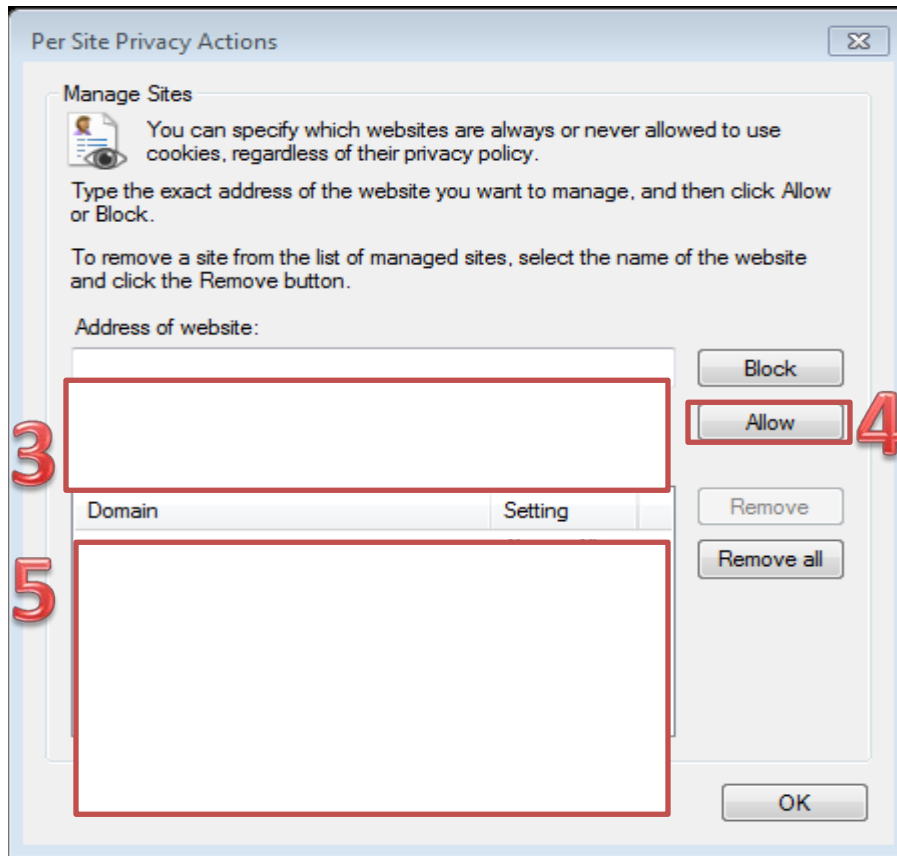
1. Set the slider to "Medium".



2. This should be enough to enable cookies on timeanddate.com, but it is recommended to add timeanddate.com to the Sites list. To do this, click "Sites".
3. Enter "timeanddate.com" in the "Address of the website:" input. Enter "the web site " in the " Use the Web site their trying to get to:" input.

Rain Employer Portal add wrsrainemployer.wyo.gov
 Rain Participant Portal Add wrsrain.wyo.gov
 458 Deferred Comp Add wrsdcpquest.gwrs.com

4. Click Allow



5. The Website you just added should show up in this box if need add more websites.

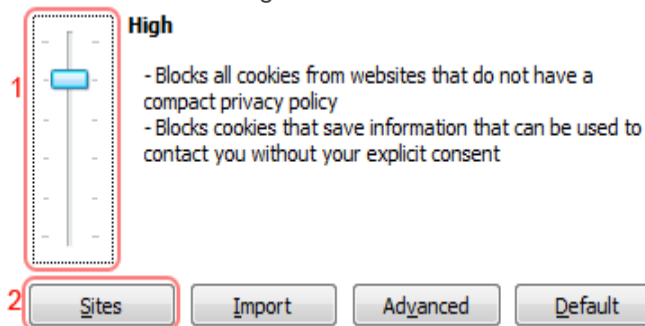
6. Click "OK".

7. Click "OK".

8. Restrict to selective sites

NOTE: using this method you will have to enable cookies for every site you need them on.

9. Set the slider to "High".



10. Click "Sites".

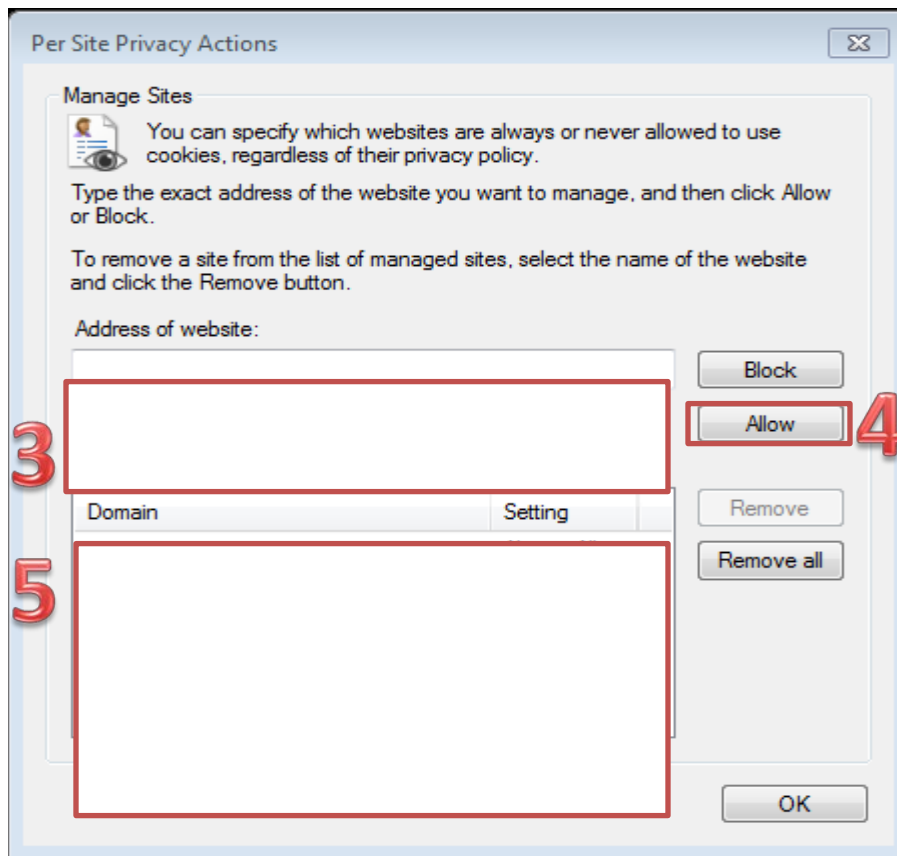
11. Enter "the web site " in the " Use the Web site their trying to get to:" input.

Rain Employer Portal add **wrsrainemployer.wyo.gov**

Rain Participant Portal Add **wrsrain.wyo.gov**

458fered Comp Add **wrsdcpguest.gwrs.com**

12. Click Allow



13. The Website you just added should show up in this box if need add more websites.
14. Click "OK".
15. Click "OK".